

Built Out Professional Office

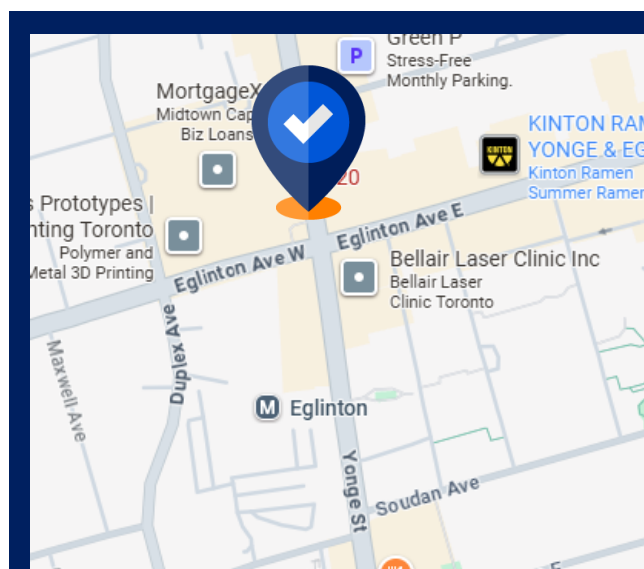
Midtown corner unit with great city views

Space Profile

Premises	Suite 1902
Total Rentable Area	2,737 SF
Net Rent	Contact Agent
Estimated Additional Rent	\$30.29 PSF + Utilities
Available	Immediately
Term	August 30, 2027

Features

- 3 standard private offices, 2 executive sized offices
- 10-person meeting room
- Galley style kitchenette
- Open reception and collaboration area, which could be densified for bench seating
- Workstations and furniture available
- Corner unit with great south and east facing views
- Building complex has a new food hall, rooftop patio, underground parking, bicycle storage and direct access to TTC Eglinton Station/ Crosstown LRT



Oscar Brown

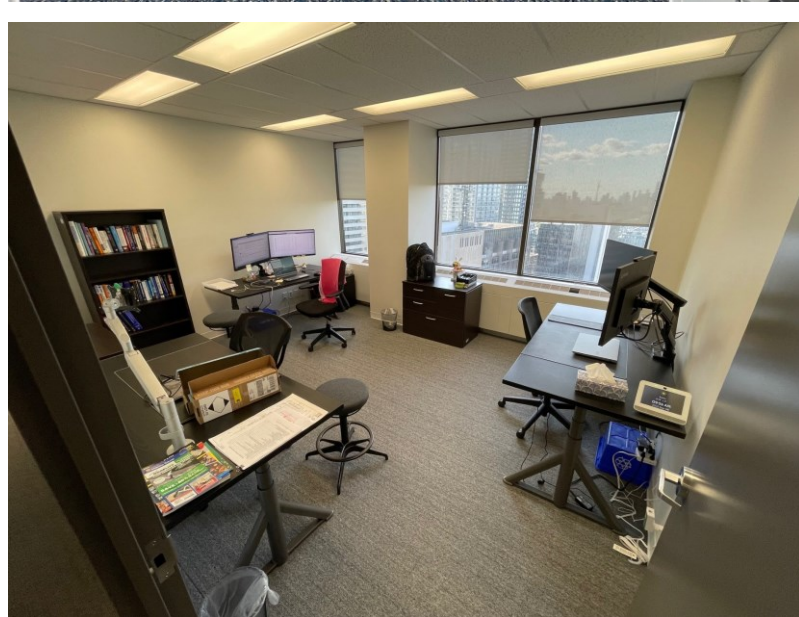
Advisor, Sales Representative
416.315.8532
obrown@cresa.com



Adam Raithby

Vice President,
Sales Representative
416.707.0644
araithby@cresa.com

20 Eglinton Ave West - Toronto, ON



cresa



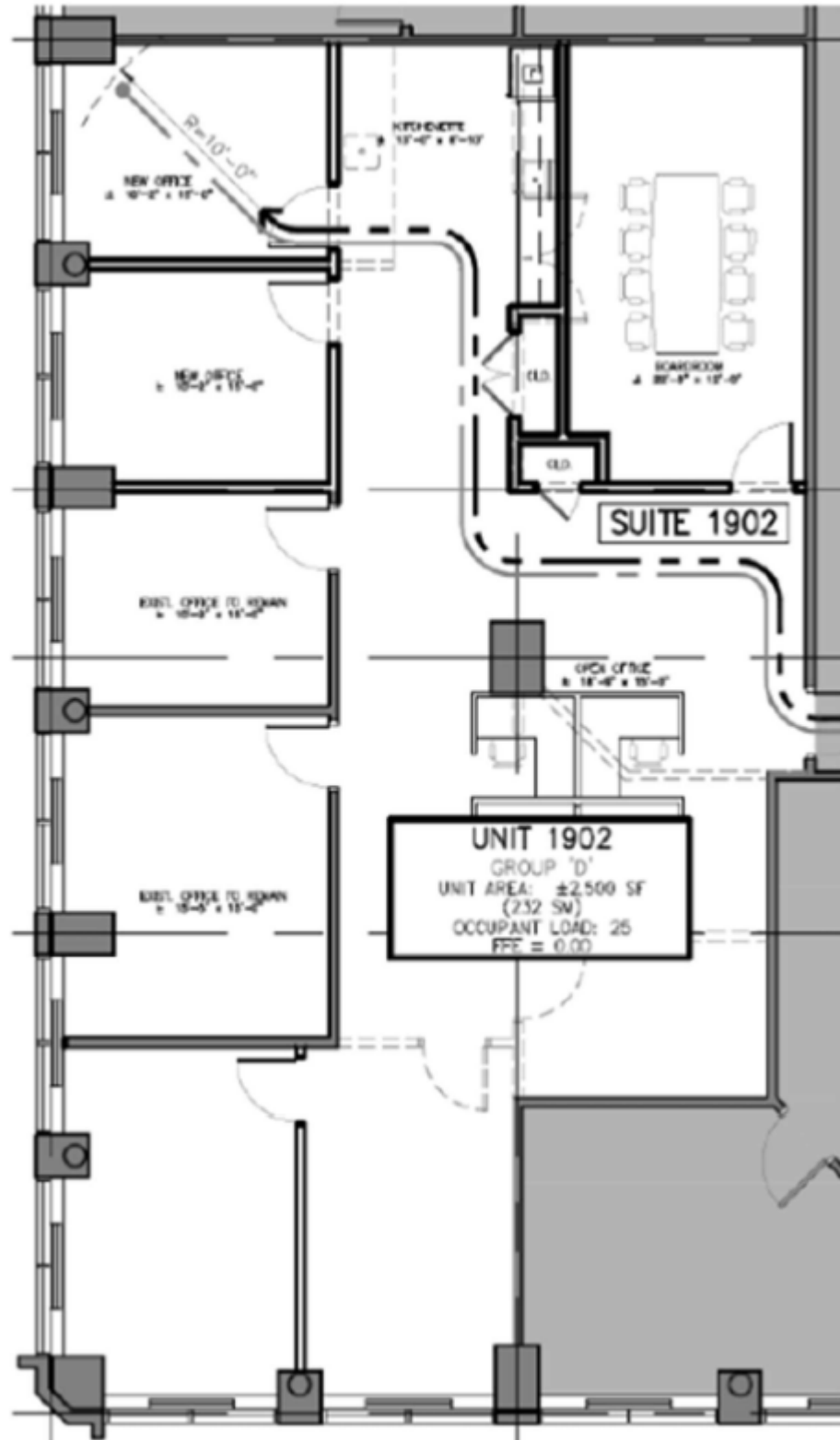
Adam Raithby
Vice President, Sales Representative
416.707.0644
araithby@cresa.com



Oscar Brown
Advisor, Sales Representative
416.315.8532
obrown@cresa.com

For More Information

Cresa Toronto Inc., Brokerage - 200 Wellington Street West, Suite 600 - Toronto, ON - M5V 3G2 - cresa.com/toronto



Adam Raithby

Vice President, Sales Representative
416.707.0644
araithby@cresa.com



Oscar Brown

Advisor, Sales Representative
416.315.8532
obrown@cresa.com